

Recombinant Anti-HA-tag Mouse mAb

Catalog #	Source	Reactivity	Applications
CMA3013	Mouse	N/A	WB, IF/IC, IP
Description	Recombinant mouse monoclonal antibody to HA-tag		
Immunogen	KLH-conjugated synthetic peptide encompassing a sequence of HA-tag. The exact sequence is proprietary.		
Purification	This antibody is purified by protein A affinity chromatography.		
Specificity	Recognizes C-terminal, internal, and N-terminal HA-tag fusion proteins.		
Clonality	Monoclonal		
Conjugation			
Form	Liquid in PBS, pH 7.4, containing 50% glycerol, 0.05% BSA and 0.01% sodium azide.		
Dilution	WB (1/2000 - 1/5000), IF/IC (1/200 - 1/500), IP (1/100 - 1/200)		
Gene Symbol			
Alternative Names			
Entrez Gene			
SwissProt			
Storage/Stability	Shipped at 4°C. Upon delivery aliquot and store at -20°C for one year. Avoid freeze/thaw cycles.		

Application key: E- ELISA, WB- Western blot, IH- Immunohistochemistry, IF- Immunofluorescence, FC- Flow cytometry, IC- Immunocytochemistry, IP- Immunoprecipitation, ChIP- Chromatin Immunoprecipitation, EMSA- Electrophoretic Mobility Shift Assay, BL- Blocking, SE- Sandwich ELISA, CBE- Cell-based ELISA, RNAi- RNA interference

Species reactivity key: H- Human, M- Mouse, R- Rat, B- Bovine, C- Chicken, D- Dog, G- Goat, Mk- Monkey, P- Pig, Rb- Rabbit, S- Sheep, Z- Zebrafish

COHESION BIOSCIENCES LIMITED

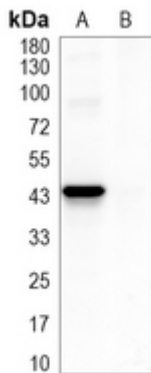
WEB
www.cohesionbio.com

ORDER
order@cohesionbio.com

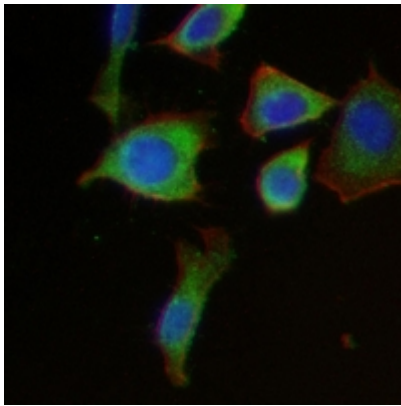
SUPPORT
techsupport@cohesionbio.com

CUSTOM
custom@cohesionbio.com

Product Data Sheet



Western blot analysis of HA-tag in 293F transfected with a vector overexpressing HA tag (A), 293F transfected with an empty vector (B).



Immunofluorescent analysis of HA-tag staining in 293T cells transfected with a HA-tag protein. Formalin-fixed cells were permeabilized with 0.1% Triton X-100 in TBS for 5-10 minutes and blocked with 3% BSA-PBS for 30 minutes at room temperature. Cells were probed with the primary antibody in 3% BSA-PBS and incubated overnight at 4 °C in a humidified chamber. Cells were washed with PBST and incubated with a AF488-conjugated secondary antibody (green) in PBS at room temperature in the dark. Phalloidin - AF594 was used to stain Actin filaments (red). DAPI was used to stain the cell nuclei (blue).

Application key: E- ELISA, WB- Western blot, IH- Immunohistochemistry, IF- Immunofluorescence, FC- Flow cytometry, IC- Immunocytochemistry, IP- Immunoprecipitation, ChIP- Chromatin Immunoprecipitation, EMSA- Electrophoretic Mobility Shift Assay, BL- Blocking, SE- Sandwich ELISA, CBE- Cell-based ELISA, RNAi- RNA interference

Species reactivity key: H- Human, M- Mouse, R- Rat, B- Bovine, C- Chicken, D- Dog, G- Goat, Mk- Monkey, P- Pig, Rb- Rabbit, S- Sheep, Z- Zebrafish

COHESION BIOSCIENCES LIMITED

WEB

www.cohesionbio.com

ORDER

order@cohesionbio.com

SUPPORT

techsupport@cohesionbio.com

CUSTOM

custom@cohesionbio.com