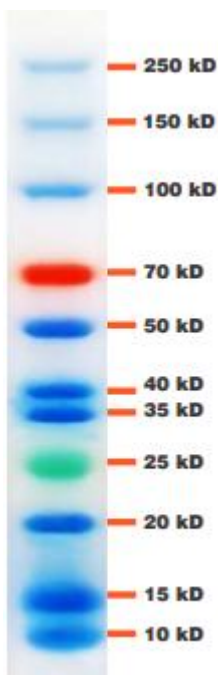


Product Specification

Product Name:	10-250kDa Wide Range Blue/Red/Green Three Color Pre-stained Protein Ladder
Product Code:	BZ0011G
Size:	500 μ l/vial

Product Description:

Bio Basic pre-stained protein ladder is designed for estimating the approximate size of separated proteins on SDS-PAGE gel. The ladders are a mixture of recombinant proteins ranging from 10kDa to 250kDa. Red or green bands at 70kDa and 25kDa provide easy references for molecular weight identification. The molecular weights of the pre-stained ladders are confirmed using the Tris-Glycine SDS-PAGE system with an accuracy of >95% by using unstained protein ladders. The protein ladders are highly stable with minimal band broadening during storage. Products are conveniently packaged and ready to use, with no heating, diluting or additional reducing agent required.



4-20% Gradient gel SDS-PAGE

Recommended Loading: 5 μ l/well (mini gel)

Usage: Thaw in room temperature and mix gently before use. Do not boil as this protein ladder is ready-to-use.

Rev 0

2 International Business Park Road Strategy #01-04, Singapore(609930)

Tel: (+65) 6954 2519, (+65) 6491 5938

Email: sg@biobasic-asia.com Web: www.biobasic-asia.com

Test Items

Specifications

SDS Electrophoresis analysis

Distinguishable bands

Storage Condition: -20°C

Rev 0

2 International Business Park Road Strategy #01-04, Singapore(609930)

Tel: (+65) 6954 2519, (+65) 6491 5938

Email: sg@biobasic-asia.com Web: www.biobasic-asia.com